

MD523-1 Bogie

Bogie Description

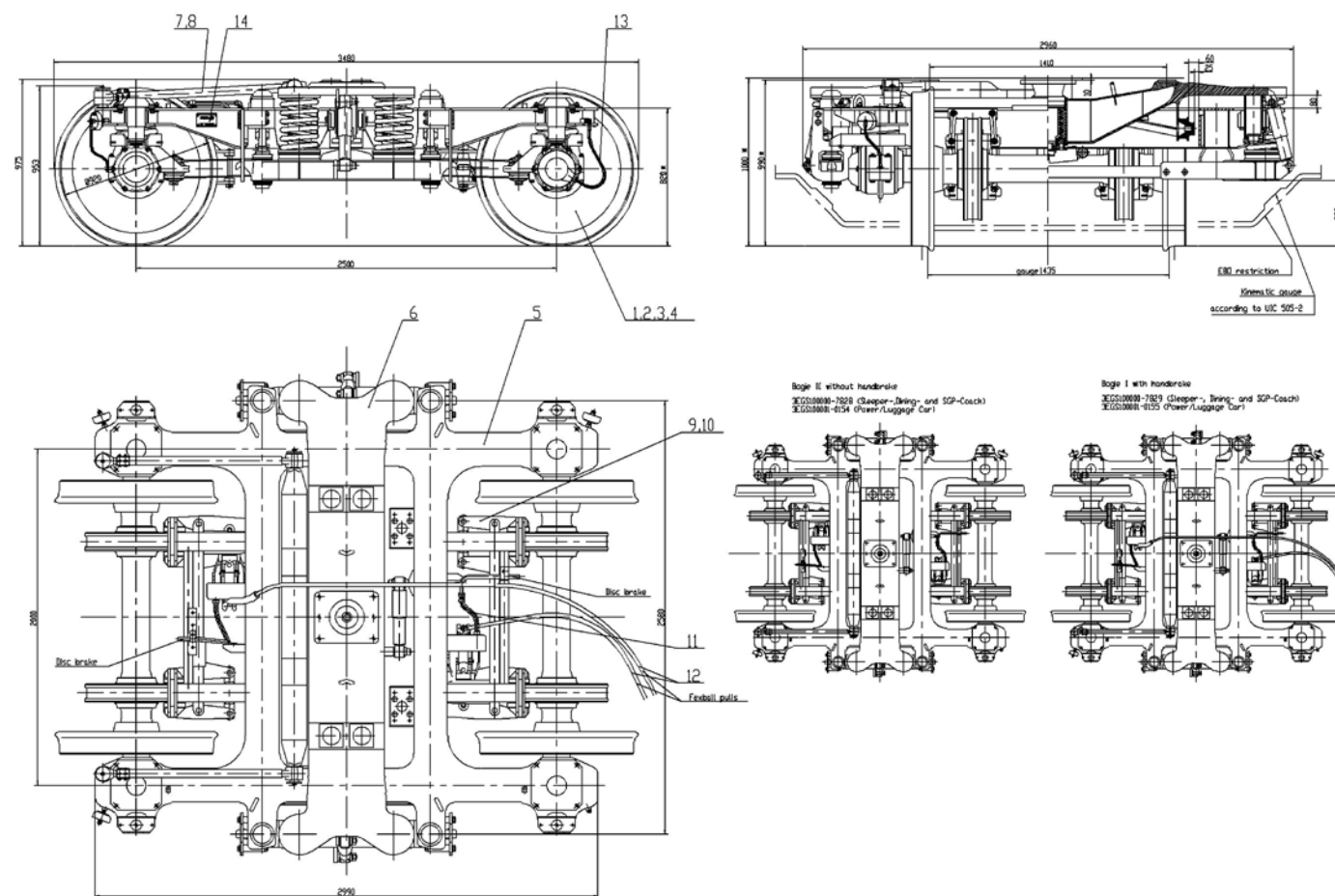
This bogie meets UIC condition and is designed for using in passenger coaches. The primary suspension system is located between the wheel set roller bearing and the bogie frame. The secondary damping system is located between the bogie bolster and the bogie frame.

The manufacturing Technology of this bogie has been awarded through Bombardier transportation Co. for manufacturing of 366 sets of this kind of bogie for Iranian railway, which are running at maximum speed of 160 km/h over RAI tracks.



Bogie Layout

MD523-1 Bogie



Technical Parameter

■ Track gauge	1435 mm	■ Wheel type	monoblock
■ Min. Radius	80 m	■ Wheel diameter	920/860 mm
■ Max. axle load	16 ton	■ Bogie weight	6000 kg
■ Speed	160 km/h	■ Brake system	two disc brake per axle
■ Wheel base	2500 mm	■ Spring type	coil spring

