



MD36 Bogie

Bogie Description

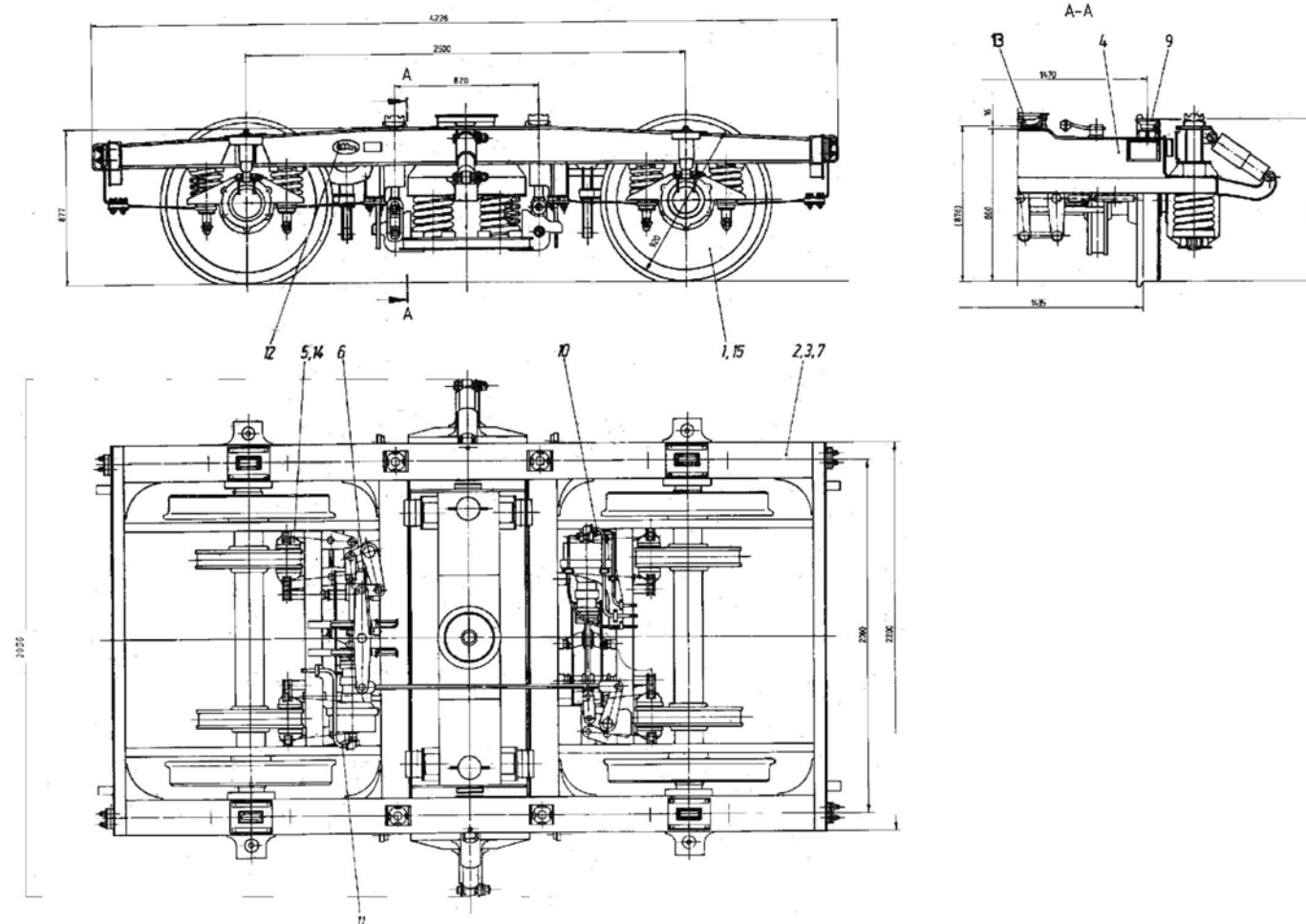
The bogie MD36 is standard type of construction Minden-Deutz 36 with helical and dust-proof shock absorbers. They have a double spring Suspension and are able to take up center pivot loads up to full carrying capacity of the wheelsets. All opening for levers and pins are provided with exchangeable steel bushes.

Wagon Pars Company has produced 382 sets of this kind of bogie working under first class passenger coaches manufactured by WPC which are in operation in RAI tracks. Meanwhile Wagon Pars Company has contracted for 200 units of passenger coaches equipped with this type of bogie for export as well as 200 bogies for RAI in 2006.



Bogie Layout

MD36 Bogie



Technical Parameter

■ Track gauge	1435 mm	■ Wheel type	retyreable
■ Min. Radius	80 m	■ Wheel diameter	920/860 mm
■ Max. axle load	16 ton	■ Bogie weight	5500 kg
■ Speed	140 km/h	■ Type of brake	disc
■ Wheel base	2500 mm	■ Spring type	coil spring